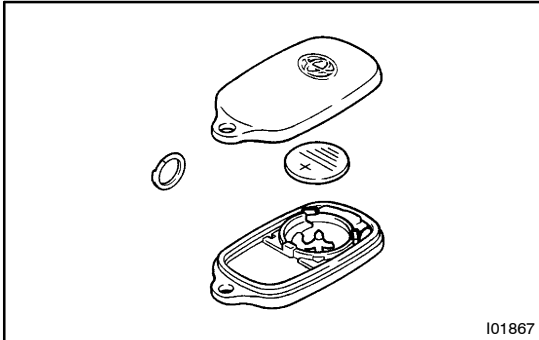


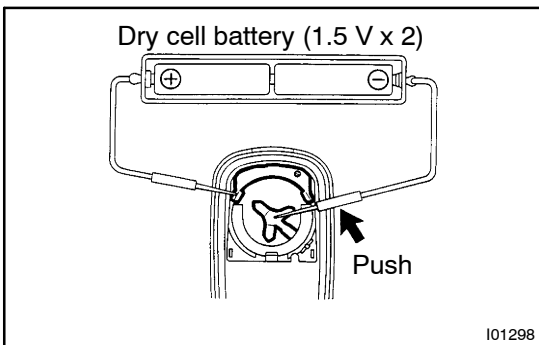
## REPLACEMENT

### 1. REPLACE BATTERY OF TRANSMITTER

- (a) Using a screwdriver, remove the cover.



- (b) Remove the battery.  
 (c) Set a new battery into the transmitter.  
 (d) Install the cover to the transmitter.



### 2. INSPECT TRANSMITTER OPERATION

#### HINT:

This inspection is not directly for the purpose of checking the capacity of the transmitter battery, but is performed when remote control operation becomes difficult or impossible, in order to ascertain if this is caused by low battery capacity.

- (a) Using a screwdriver, remove the cover.  
 (b) Remove the battery.  
 (c) Connect 2 new 1.5 V dry-cell batteries in series. Connect the battery  $\oplus$  terminal to the battery receptacle side terminal and the battery  $\ominus$  terminal to the bottom terminal to provide 3 V to the transmitter.  
 (d) Push the wireless door lock remote control switch on the side of the transmitter body and operate the door lock by remote control.  
 (e) Check remote control operation possible.

If operation is not as specified, replace the transmitter.

### 3. REPLACE DOOR CONTROL RECEIVER AND TRANSMITTER

#### NOTICE:

**When replacing the door control receiver and transmitter, registration of recognition code is necessary because they are provided as single components.**

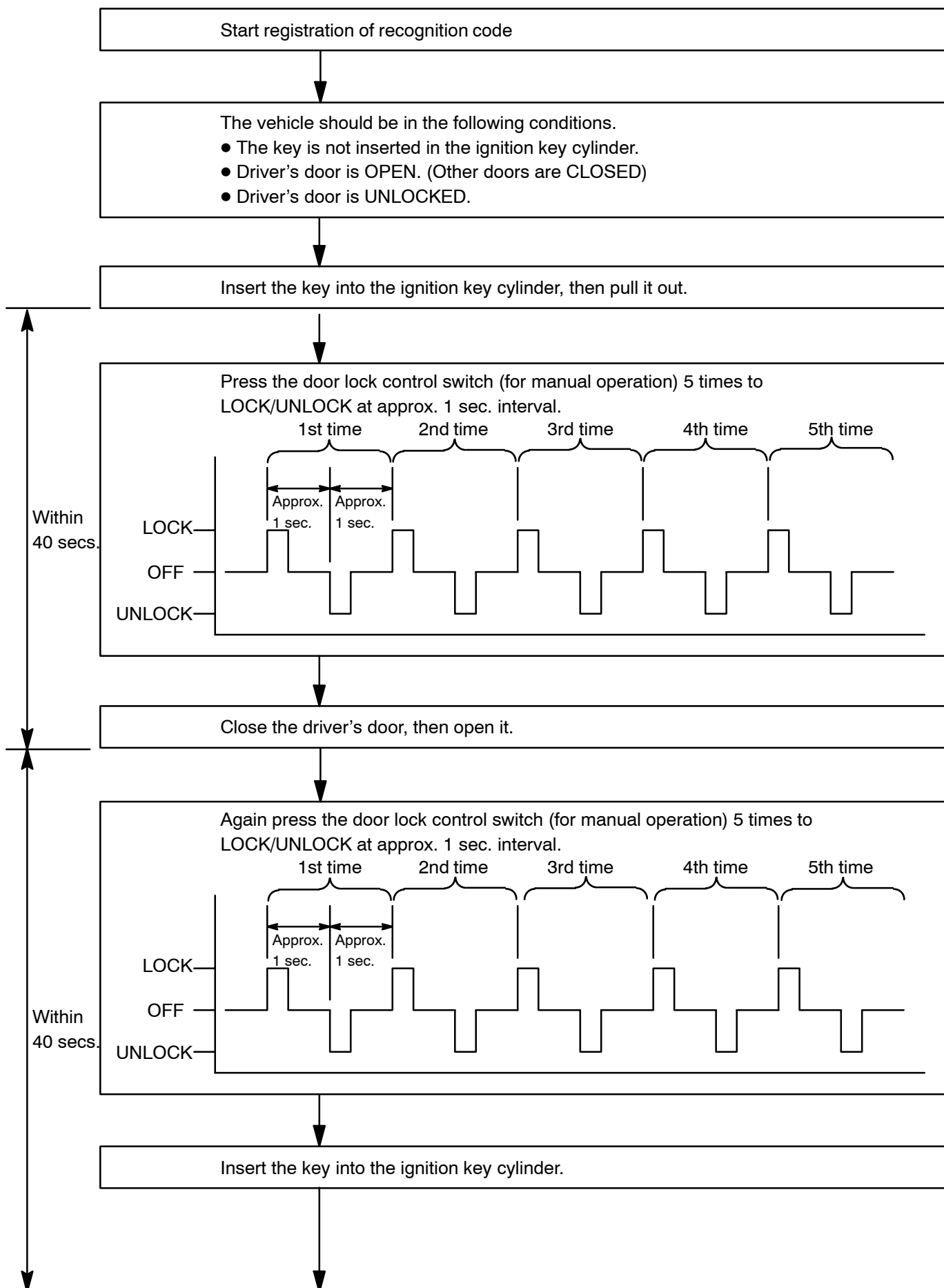
- (a) Select which operation mode should be performed from the following modes.
- Add mode
  - Rewrite mode
  - Prohibition mode
  - Confirmation mode

#### HINT:

- The add mode is used to retain codes already registered while you register new recognition codes. This mode is used when adding a transmitter. However, if the number of registered codes exceeds 4 codes, previously registered codes are correspondingly erased in order, starting from the first registered code.
  - The rewrite mode is used to erase all previously registered codes and register only new recognition codes.
  - The prohibition mode is used to erase all registered codes and cancels the wireless door lock function. Use this mode when the transmitter is lost.
  - The confirmation mode is for confirming how many recognition codes are already registered before you register additional recognition codes.
- (b) Follow the chart on the following pages to register the transmitter recognition code at the wireless door lock control receiver.

#### HINT:

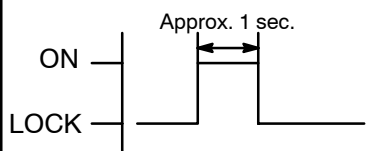
- When procedure is out of the specified, the operation returns to normal operation.
- Maximum 4 recognition codes can be registered.



Turn the ignition switch from ON to LOCK at approx. 1 sec. interval 1 to 5 times to select the mode.

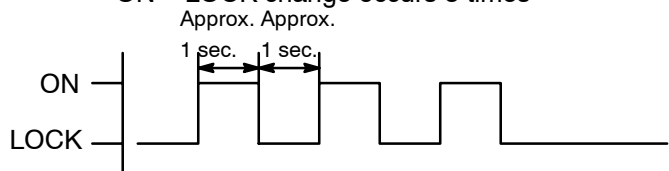
#### Add mode

ON - LOCK change occurs 1 time



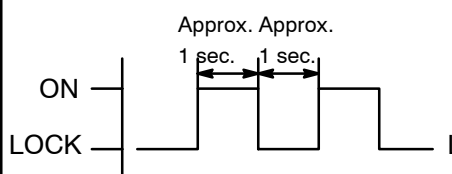
#### Confirmation mode

ON - LOCK change occurs 3 times



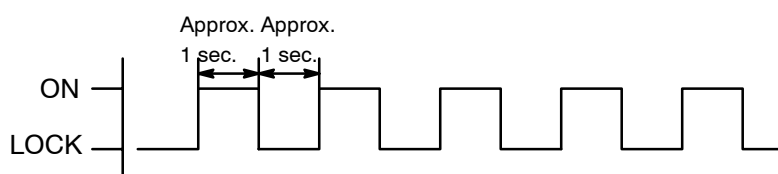
#### Rewrite mode

ON - LOCK change occurs 2 times



#### Prohibition mode

ON - LOCK change occurs 5 times



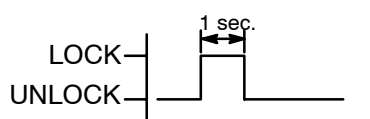
Pull out the key plate from the ignition key cylinder.

When add mode or rewrite mode is selected.

Door control receiver automatically performs the LOCK-UNLOCK operation once or twice at 1 sec. interval to inform the operator that either the add mode or rewrite mode has been selected.

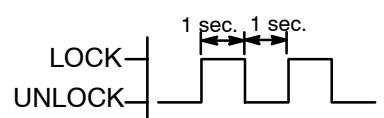
#### LOCK-UNLOCK occurs once

Indicates that add mode has been selected.



#### LOCK-UNLOCK occurs twice

Indicates that rewrite mode has been selected.



Within 3 secs.

When prohibition mode is selected.

When confirmation mode is selected.

Door control receiver automatically performs the LOCK-UNLOCK operation 1 to 4 times at

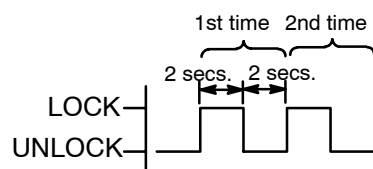
2 sec. interval to inform the operator of the number of the registered codes.

HINT:

When the number of the registered code is 0, the operation is automatically performed 5 times.

Example:

When the operation is performed twice, it directs that 2 types of recognition code have been registered.



Registration of recognition code (Confirmation mode and prohibition mode) is completed.

